

# THE BR'ER FACTS

NOVEMBER  
2006



Uncle Remus Regional Library System  
Serving Greene, Hancock, Jasper, Morgan,  
Putnam and Walton Counties

## MATERIALS ORDERED 2006—2007

	JUL	AUG	SEPT	OCT	NOV	DEC	JAN	FEB	MAR	APR	MAY	JUN	TOTAL
GREENE	112	350	97	334									893
HANCOCK	114	309	60	258									741
JASPER	96	274	287	266									923
MORGAN	124	257	83	514									978
PUTNAM	126	323	97	334									880
O'KELLY	110	270	235	646									1261
MONROE	114	281	180	717									1292
STANTON	83	290	310	659									1342
Regional Databases	3	2	0	0									5
TOTAL	882	2356	1349	3728									8315

Note: A magazine subscription is counted as one item and is counted in one month only.

## BOARD MEETINGS FOR 2007

January 11

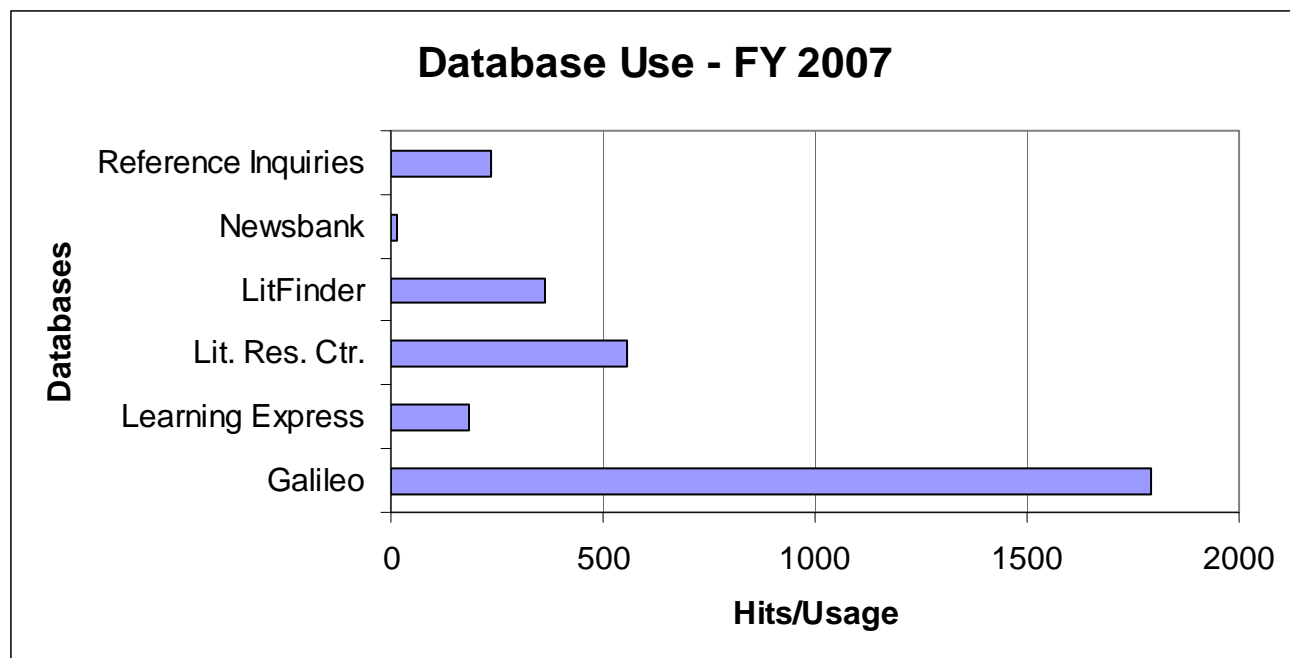
April 12

August 9

October 11

2:00 p.m. at the Regional Office

# REFERENCE ACTIVITY OCTOBER 2006



Database Statistics FY 2007	TOTAL
Info USA (O'Kelly Only)	2296
Galileo	1794
Learning Express	183
Lit. Res. Ctr.	555
LitFinder	363
Newsbank	14
Reference Inquiries	237
<b>TOTAL</b>	<b>5442</b>

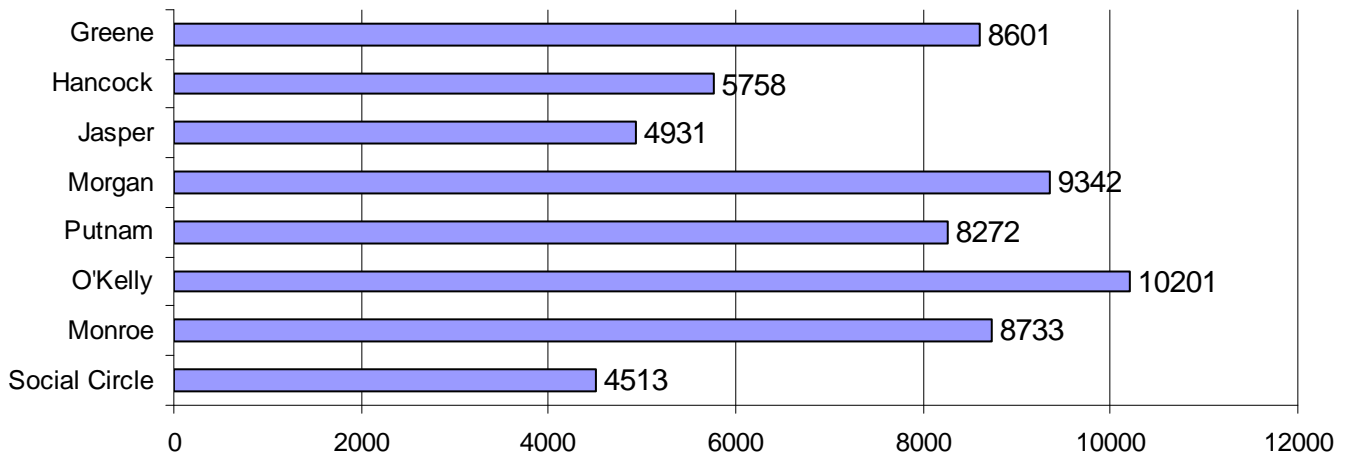
# LIBRARY VISITS OCTOBER 2006

How many times did people enter the library in OCTOBER?

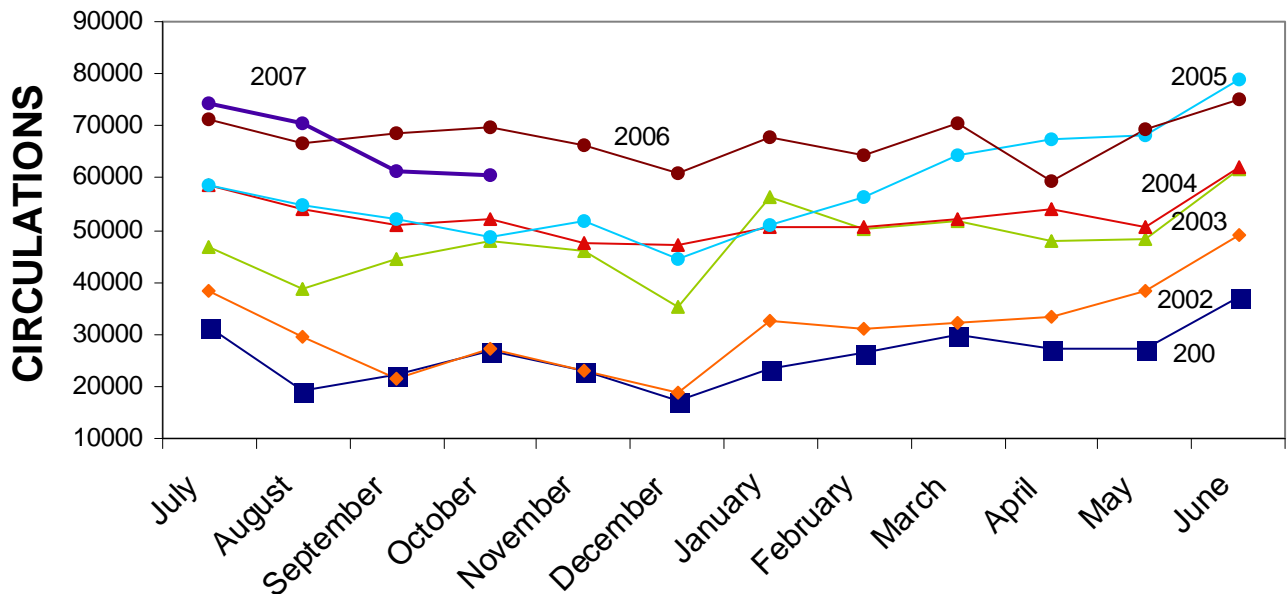
LIBRARY NAME	NUMBER OF VISITS
GREENE COUNTY LIBRARY	9999
HANCOCK COUNTY LIBRARY	4966
JASPER COUNTY LIBRARY	6206
MORGAN COUNTY LIBRARY	7132
PUTNAM COUNTY LIBRARY	5670
O'KELLY MEMORIAL LIBRARY	7890
MONROE-WALTON COUNTY LIBRARY	5796
W.H. STANTON MEMORIAL LIBRARY	4218

# Circulation Report

## PINES URRLS Oct 2006 Total Circulation



### CIRCULATION FY 2001, FY 2002, FY 2003, FY 2004, FY2005, FY2006, FY2007



Note: FY2007 is using slightly different statistical parameters than FY2001—2006.





## PROGRAMS—OCTOBER 2006

GREENE	HANCOCK	JASPER	MORGAN
<p>Date of Program: October 2006</p> <p>Total Attendance: 96</p> <p>Adult Attendance: 28</p> <p>Child Attendance: 88</p> <p>Inhouse or Outreach: Storytime for October 2006</p> <p>Comments:</p>	<p>Date of Program: 10/17/06</p> <p>Total Attendance: 172</p> <p>Adult Attendance: 35</p> <p>Child Attendance: 137</p> <p>Inhouse or Outreach: Inhouse</p> <p>Comments: Renee Hanna</p>	<p>Date of Program: 10/31/06</p> <p>Total Attendance: 717</p> <p>Adult Attendance: 215</p> <p>Child Attendance: 502</p> <p>Inhouse or Outreach: Inhouse</p> <p>Comments: Jasper County Library had it's Hauntello Night. Over 500 pieces of candy was given out to children of all ages.</p>	<p>Date of Program: October – Every Other Thursday</p> <p>Total Attendance: 12</p> <p>Adult Attendance: 12</p> <p>Child Attendance: 0</p> <p>Inhouse or Outreach: Outreach</p> <p>Comments: Ongoing program for Madison House Assisted Living and Oconee House Senior Living. Check out books to residents, deliver to facility, pickup completed books. Provide listing of all large print titles by author and title for each participant.</p>
			<p>Date of Program: 10/11/06</p> <p>Total Attendance: 166</p> <p>Adult Attendance: 29</p> <p>Child Attendance: 137</p> <p>Inhouse or Outreach: Inhouse</p> <p>Comments: Storytime with Renee Hanna for Pre-K and Kindergarten. Attendance was down due to rainy weather.</p>

## PROGRAMS—OCTOBER 2006

PUTNAM	MONROE	MONROE	O'KELLY
<p>Date of Program: 10/24/06</p> <p>Total Attendance: 200</p> <p>Adult Attendance: 19</p> <p>Child Attendance: 181</p> <p>Inhouse or Outreach: Inhouse</p> <p>Comments: Renee Hanna Pre-School Story Time—1<sup>st</sup> Performance.</p>	<p>Dates of Programs: Oct 3<sup>rd</sup>, 10<sup>th</sup>, 17<sup>th</sup>, 24<sup>th</sup>, &amp; 31<sup>st</sup></p> <p>Total Attendance: 53</p> <p>Adult Attendance: 25</p> <p>Child Attendance: 28</p> <p>Comments: Babyreads Preschool Story Time at the Library</p>	<p>Date of Program: 10/23/06</p> <p>Total Attendance: 10</p> <p>Adult Attendance: 10</p> <p>Child Attendance: 0</p> <p>Comments: Ray Memorial Book Club Presentation. Library Manager was guest speaker.</p>	<p>Dates of Programs: 10/4/06, 10/11/06, 10/18/06</p> <p>Total Attendance: 64</p> <p>Adult Attendance: 35</p> <p>Child Attendance: 29</p> <p>Inhouse or Outreach: Inhouse</p> <p>Comments: Baby Reads Story Time with Gloria Beinstock.</p>
<p>Date of Program: 10/24/06</p> <p>Total Attendance: 243</p> <p>Adult Attendance: 18</p> <p>Child Attendance: 225</p> <p>Inhouse or Outreach: Inhouse</p> <p>Comments: Renee Hanna Pre-School Story Time—2<sup>nd</sup> Performance.</p>	<p>Dates of Programs: Oct 10<sup>th</sup>, 12<sup>th</sup>, &amp; 20<sup>th</sup></p> <p>Total Attendance: 421</p> <p>Adult Attendance: 71</p> <p>Child Attendance: 350</p> <p>Comments: Renee' Hanna Pre-school Story Time. Three story times inhouse, one outreach to Monroe Primary School.</p>	<p>Date of Program: 10/30/06</p> <p>Total Attendance: 37</p> <p>Adult Attendance: 13</p> <p>Child Attendance: 24</p> <p>Comments: Halloween Story Time with the "Talking Tree," refreshments and costume contest. Organized and sponsored by the Monroe Junior Service League.</p>	<p>Date of Program: 10/20/06</p> <p>Total Attendance: 221</p> <p>Adult Attendance: 33</p> <p>Child Attendance: 188</p> <p>Inhouse or Outreach: Inhouse</p> <p>Comments: Renee Hanna Story Time.</p>



## PROGRAMS—OCTOBER 2006

O'KELLY	SOCIAL CIRCLE		
<p>Dates of Programs: 10/24/06 and 10/25/06</p> <p>Total Attendance: 45</p> <p>Adult Attendance: 6</p> <p>Child Attendance: 51</p> <p>Inhouse or Outreach: Inhouse</p> <p>Comments: Loganville Christian Academy doing research for Term paper and tour.</p>	<p>Date of Program: 10/12/06</p> <p>Total Attendance: 117</p> <p>Adult Attendance: 12</p> <p>Child Attendance: 105</p> <p>Inhouse or Outreach: Inhouse</p> <p>Comments: Rene Hanna</p>		