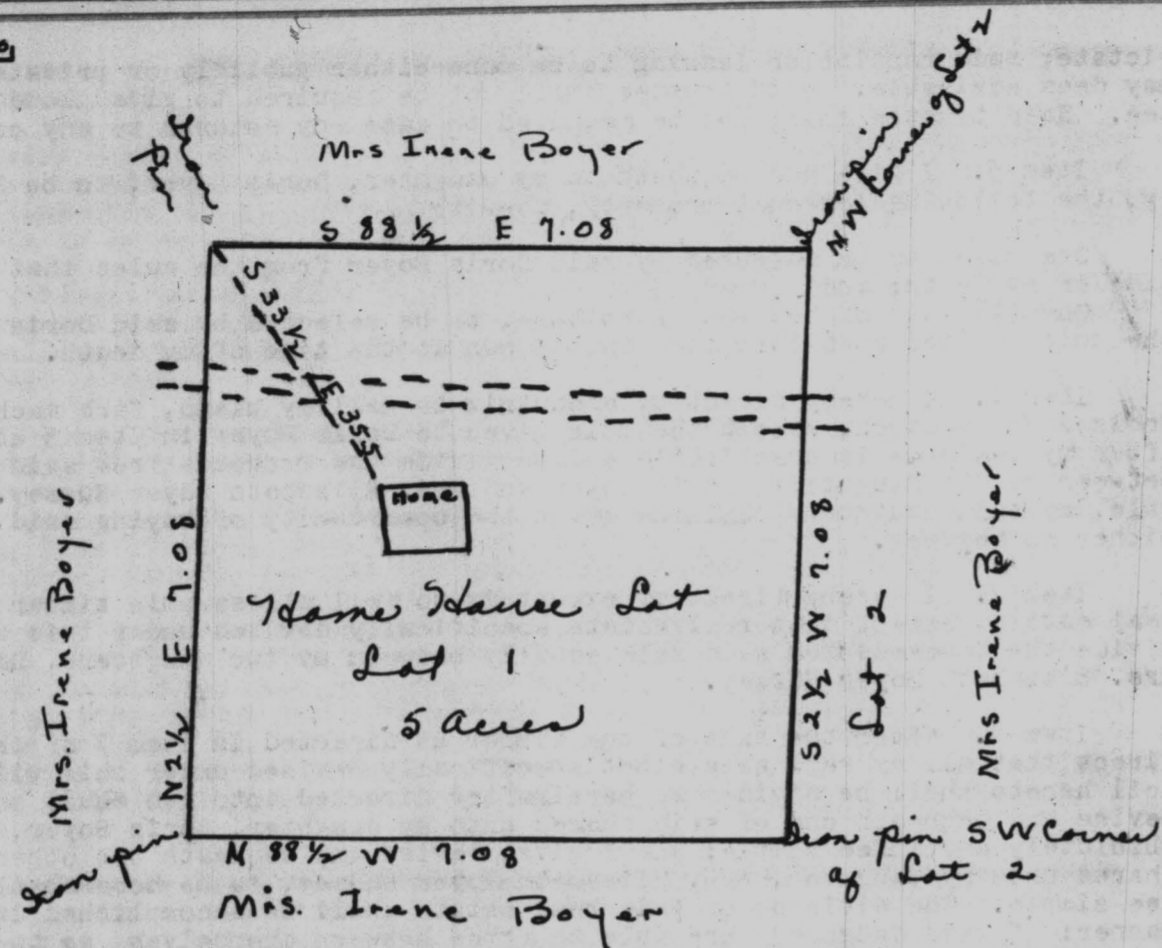


1 inch = 200'

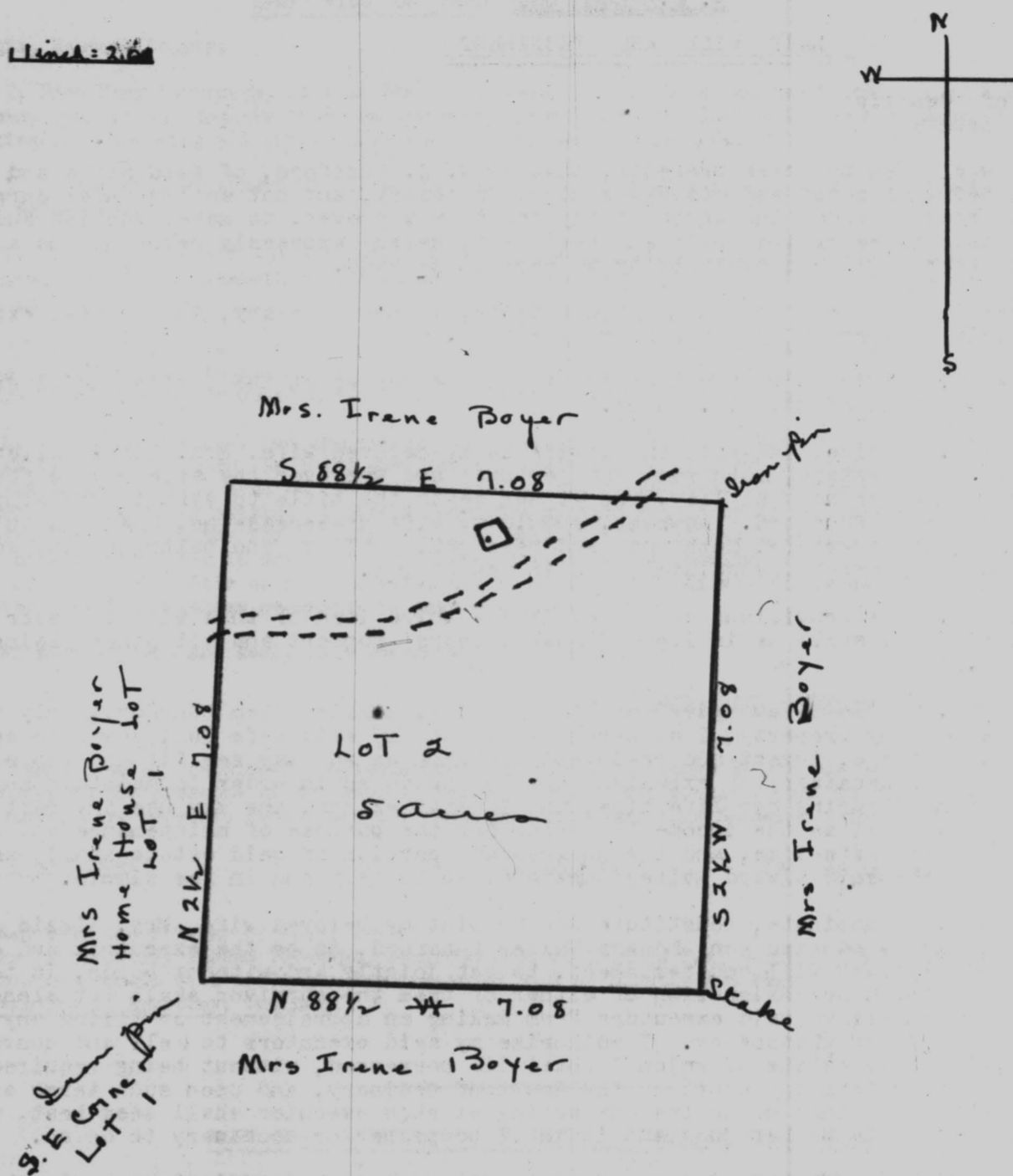


The above plat represents a tract of 5 acres including the home house and out buildings cut out of the lands of Mrs. Irene Boyer, located in the 118th District, G.M., Hancock County, State of Georgia, surveyed on the 18th day of October 1946.

/s/ Walter D. Dickson

S E A L  
Walter D. Dickson  
Georgia Registered Surveyor

1 inch = 200'



The above plat represents a tract of 5 acres adjoining the home house tract cut out of the lands of Mrs. Irene Boyer, located in the 118th District, G. M., Hancock County, State of Georgia, Surveyed on the 18th day of October, 1946.

/s/ Walter D. Dickson

S E A L  
Walter D. Dickson  
Georgia Registered Surveyor

Recorded this the 15th day of February 1952  
Letters Recorded Book of Letters No. 3 Page 38  
Petition to Probate recorded Minutes Book No 8 Page 566